



ADMINISTRATIVE-TERRITORIAL AND TERRITORIAL DIVISION OF THE REPUBLIC OF BULGARIA AS OF 31 DECEMBER 2024

As of 31 December 2024, the territory of the Republic of Bulgaria is administratively divided into 28 administrative districts and 265 municipalities, within which there are 3 041 individual mayoralties. In addition, the municipality of Sofia and the cities of Plovdiv and Varna are subdivided into composite territorial administration units (quarters): the capital municipality (Stolichna) - into 24 quarters, Plovdiv - into 6 quarters, Varna - into 5 quarters.

As of 31 December 2024, there were 5 256 settlements in the Republic of Bulgaria, of which 257 towns and 4 999 villages, while the settlement formations were 166 (including 8 of national and 158 of local importance).

According to the requirements of the Classification of Territorial Units for Statistics (NUTS) applied by the European Union, the territory of the country is divided into statistical regions with 3 hierarchical levels.

The upper two levels: NUTS1 - statistical zones, and NUTS2 - statistical regions, are not considered as administrative-territorial units, while the level NUTS3 - districts, is defined as an administrative-territorial level, which corresponds to the 28 administrative districts. NUTS3 regions and the 28 administrative districts have the same names.

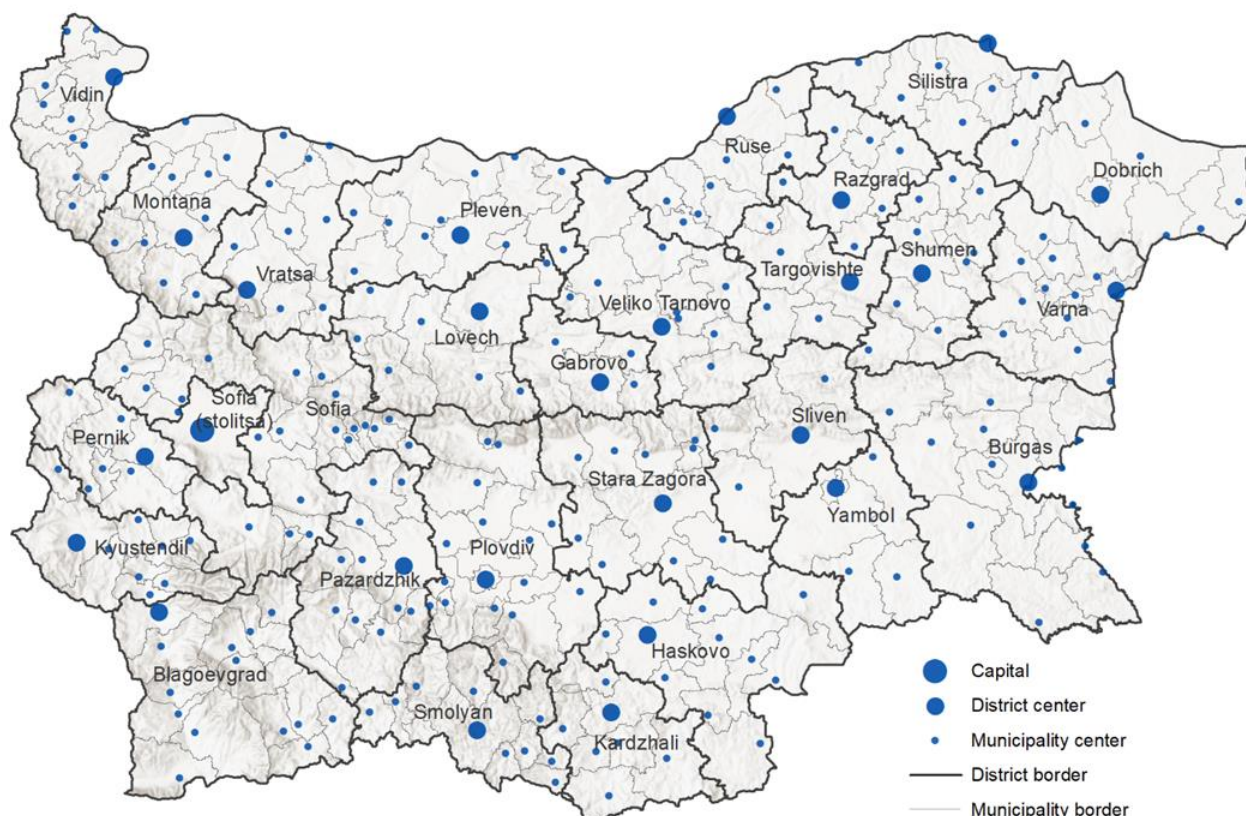
Amendments to the Unified classifier of administrative-territorial and territorial units (EKATTE) during the period from 1 January to 31 December 2024:

- *In 2024, there were no changes in the Amendments to the Unified classifier of administrative-territorial and territorial units (EKATTE).*

1. Administrative districts in the Republic of Bulgaria as of the end of 2024

The average area of a single administrative district in the Republic of Bulgaria was 3 964 sq. kilometres. The largest administrative districts by territory were Burgas, Sofia, Blagoevgrad and Plovdiv, while the smallest were Pernik, Gabrovo and Sofia (stolitsa). The smallest district in terms of territory - Sofia (stolitsa), is also the largest by population with 1 295 931 inhabitants and the only one with more than 1 000 000 inhabitants. The smallest administrative district by population is Vidin, with 70 542 inhabitants.

**Figure 1. Administrative districts in the Republic of Bulgaria
as of 31 December 2024¹**



2. Municipalities in the Republic of Bulgaria as of 31 December 2024

The largest municipality in Bulgaria by population size was Stolichna municipality. Another group of 7 municipalities had a population above 100 000 inhabitants - Plovdiv, Varna, Burgas, Stara Zagora, Ruse, Sliven and Pleven. The share of the population in these 8 municipalities represents 41.1% of the total country's population.

At the end of 2024, 145 out of the total 265 municipalities in the country had a population of below 10 000 inhabitants. The share of their population was just 12.3% of the total country's population. The smallest municipality was Treklyano (Kyustendil district) with 522 inhabitants, followed by Boynitsa municipality (Vidin district) with a population of 712.

On average, the area of one municipality in Bulgaria is 419 sq. kilometres. The largest municipality by area is the municipality of Sliven. Besides Sliven, there are only 7 more municipalities with a territory above 1 000 sq. km - Stolichna, Dobrich-selska, Tundhza

¹ The city of Sofia (the capital city) is an administrative centre of two districts - Sofia (stolitsa) (SOF), composed only by Stolichna municipality, and district of Sofia (SFO), composed by 22 municipalities.

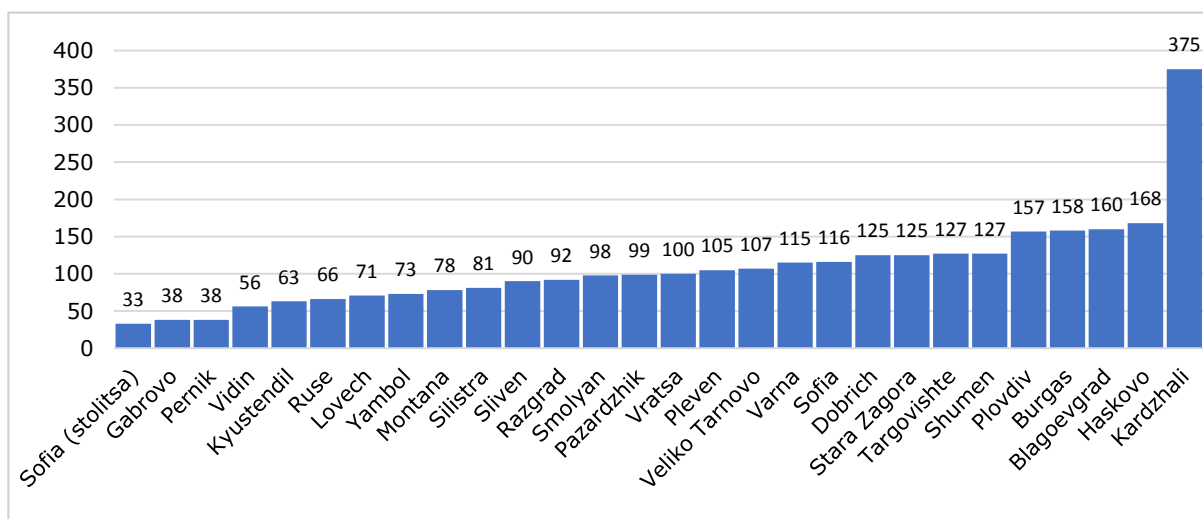
ADMINISTRATIVE-TERRITORIAL AND TERRITORIAL DIVISION OF THE REPUBLIC OF BULGARIA AS OF 31 DECEMBER 2024

(Yambol district), Samokov (Sofia district), Sredets (Burgas district), Stara Zagora and Karlovo (Plovdiv district).

On the other hand, the smallest municipality in the country is Chelopech (Sofia district). Also, 10 other municipalities have a territory of less than 100 sq. km - Nikolaevo (Stara Zagora district), Yambol, Anton (Sofia district), Chavdar (Sofia district), Dolna banya (Sofia district), Stamboliyski (Plovdiv district), Beloslav (Varna district), Sopot (Plovdiv district), Krichim (Plovdiv district) and Perushtitsa (Plovdiv district).

On the territory of 9 municipalities in the Republic of Bulgaria - Plovdiv, Dobrich, Yambol, Krichim, Perushtitsa, Koprivshtitsa, Chelopech, Anton and Chavdar - there is only one settlement, which is also the municipal centre.

Figure 2. Distribution of the mayoralties by districts as of 31 December 2024



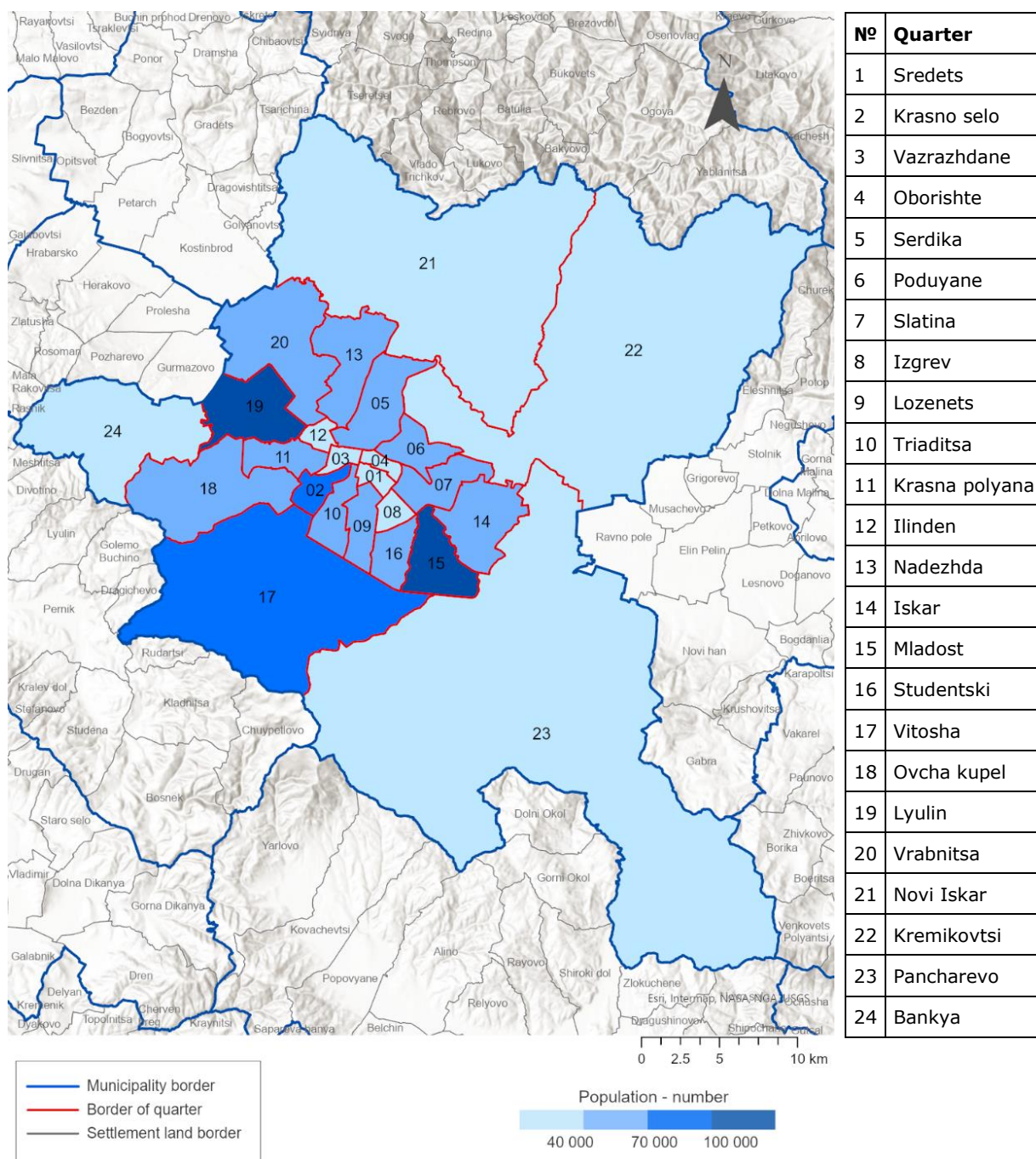
3. Composite territorial administration units (quarters):

- Quarters - 35 (in Stolichna municipality and in the cities of Plovdiv and Varna);
- Mayoralties - 3 041.

The population of the capital municipality (Stolichna) is unevenly distributed across its quarters. By the end of 2024, two of them - Lyulin and Mladost, were home to 15.6% of the population of Stolichna municipality, with over 100 000 people living in each of these quarters. The smallest quarter in Stolichna Municipality was Bankya, with a population of 11 480 people, or 0.9% of the municipality's population.

ADMINISTRATIVE-TERRITORIAL AND TERRITORIAL DIVISION OF THE REPUBLIC OF BULGARIA AS OF 31 DECEMBER 2024

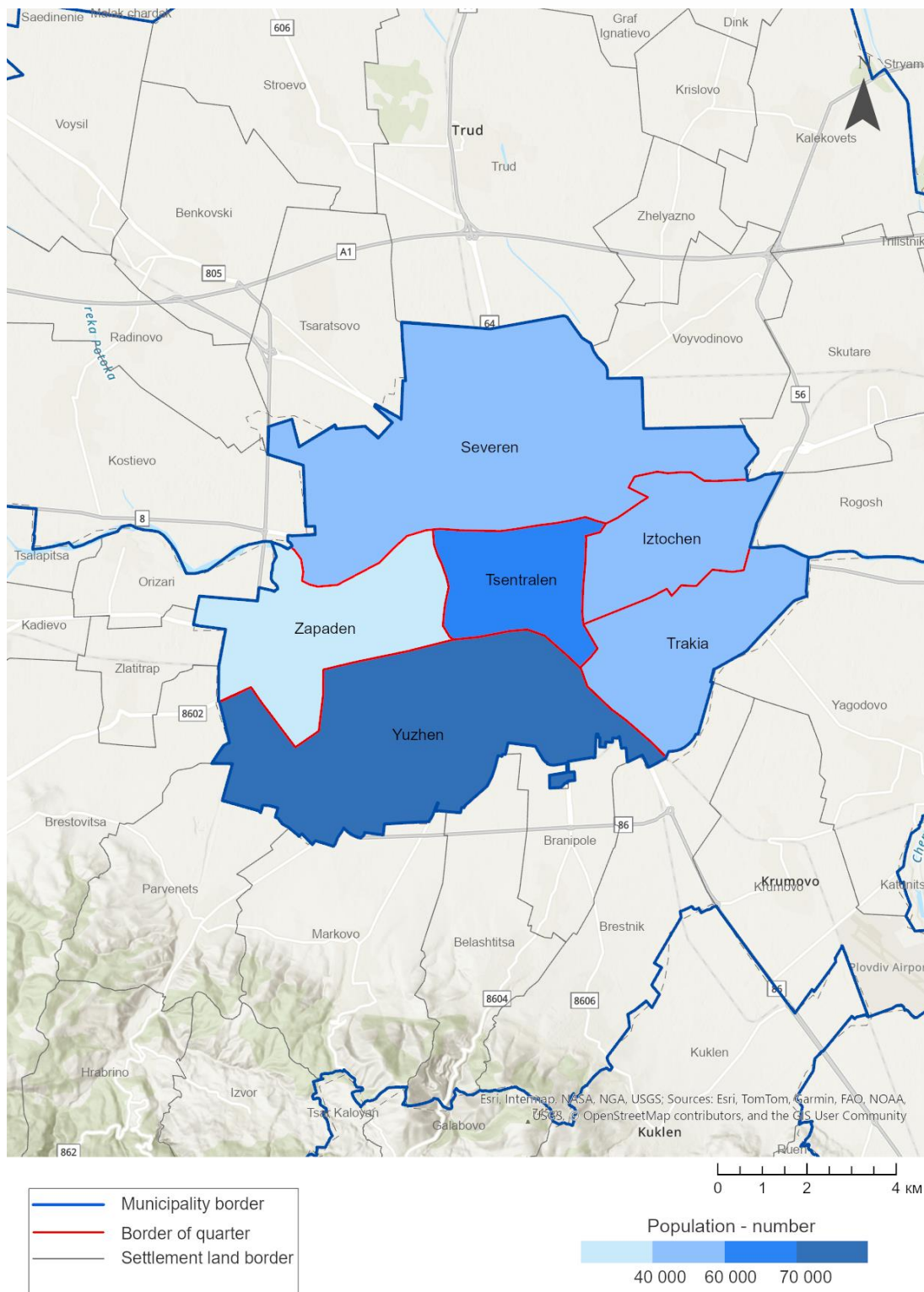
**Figure 3. Population distribution by quarters in Stolichna municipality
as of 31 December 2024**



ADMINISTRATIVE-TERRITORIAL AND TERRITORIAL DIVISION OF THE REPUBLIC OF BULGARIA AS OF 31 DECEMBER 2024

The population of the city of Plovdiv is spread more evenly by quarters - with 10.9% for the Zapaden and 22.4% for the Yuzhen quarter.

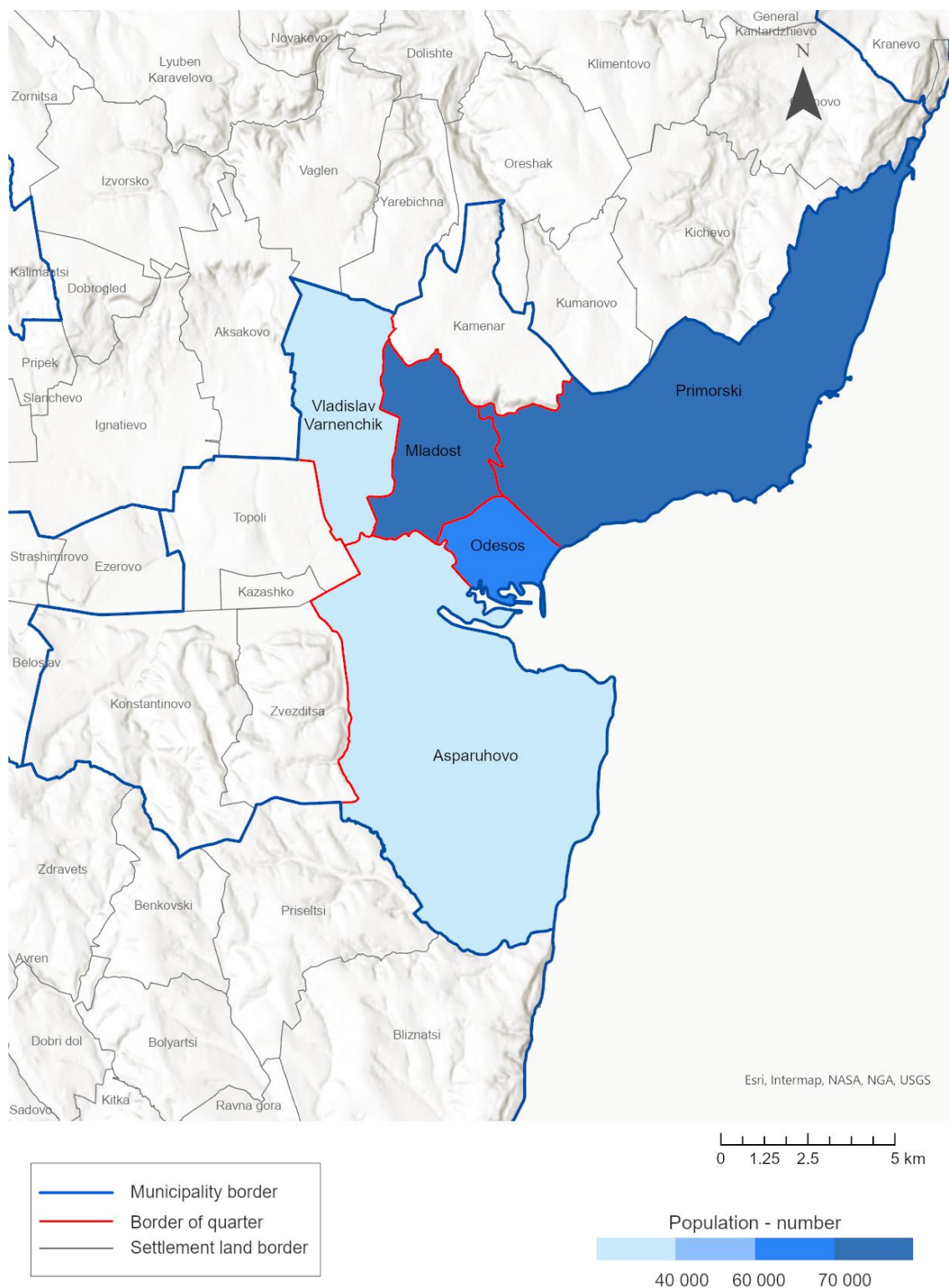
**Figure 4. Population distribution by quarters in the city of Plovdiv
as of 31 December 2024**



ADMINISTRATIVE-TERRITORIAL AND TERRITORIAL DIVISION OF THE REPUBLIC OF BULGARIA AS OF 31 DECEMBER 2024

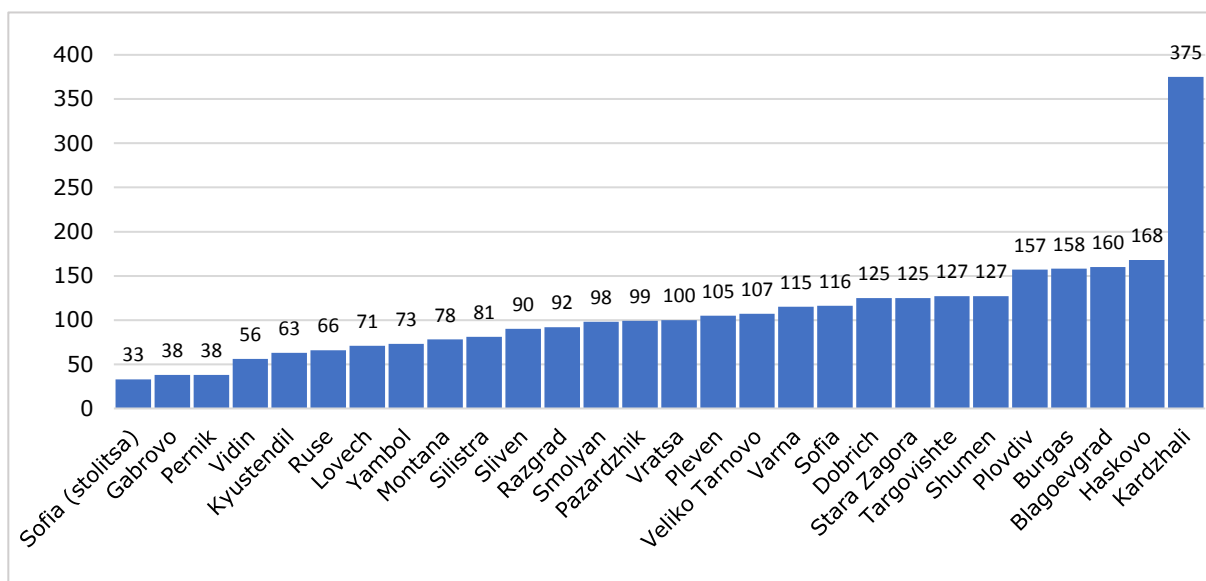
The population distribution in the quarters of the city of Varna ranges from 7.0% for the Asparuhovo quarter to 32.2% for the Primorski - the only quarter of Varna with a population of over 100 000 people.

**Figure 5. Population distribution by quarters in the city of Varna
as of 31 December 2024**



ADMINISTRATIVE-TERRITORIAL AND TERRITORIAL DIVISION OF THE REPUBLIC OF BULGARIA AS OF 31 DECEMBER 2024

Figure 6. Distribution of the mayoralties by districts as of 31 December 2024

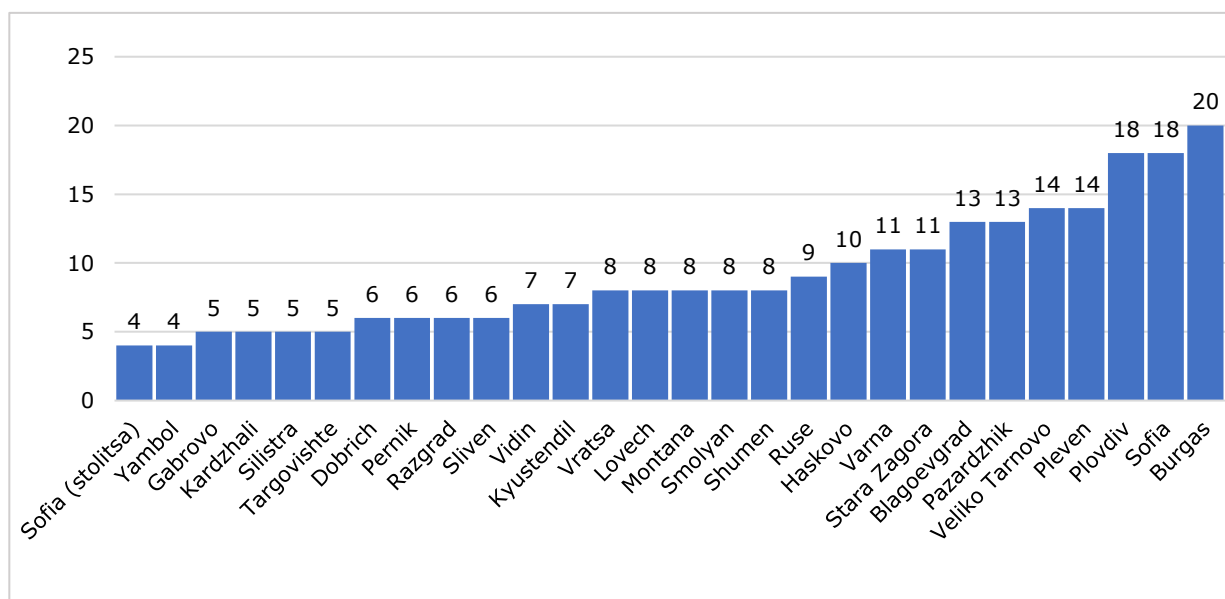


4. Territorial units in the Republic of Bulgaria as of 31 December 2024:

- Settlements - 5 256 (incl. 257 towns and 4 999 villages);
- Settlement formations - 166 (incl. 8 of national and 158 of regional/local importance).

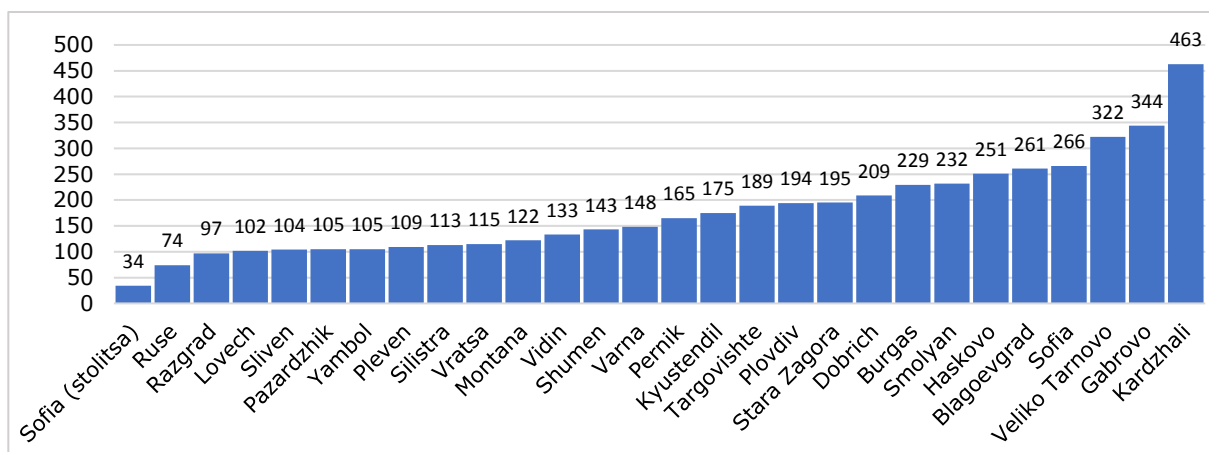
At the end of 2024, there were 199 settlements without population. The highest number of settlements without population was in the districts of Veliko Tarnovo (66), Gabrovo (64), Kyustendil (10), Kardzhali (9) and Sofia (9). In 1 258 villages, or 23.9% of the settlements, the population number was between 1 and 49 persons. There were six towns with population of more than 100 thousand persons, and 35.5% of the country's population lives there.

Figure 7. Distribution of the towns by districts as of 31 December 2024



ADMINISTRATIVE-TERRITORIAL AND TERRITORIAL DIVISION OF THE REPUBLIC OF BULGARIA AS OF 31 DECEMBER 2024

Figure 8. Distribution of the villages by districts as of 31 December 2024

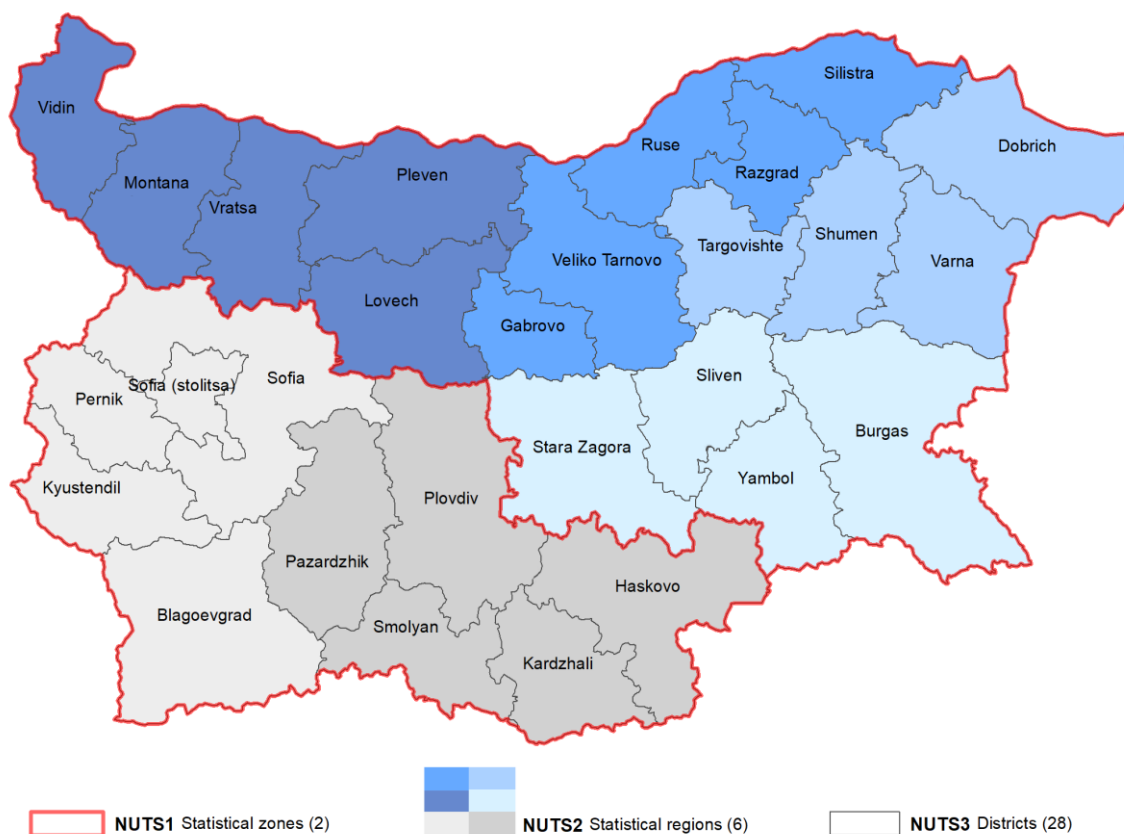


5. Territorial Units for Statistics as of 31 December 2024

According to the requirements of the common Classification of Territorial Units for Statistics (NUTS) applied by the European Union, the following levels have been defined:

- NUTS0 - the country level;
- NUTS1 - 2 statistical zones;
- NUTS2 - 6 statistical regions;
- NUTS3 - 28 districts.

Figure 9. Territorial Units for Statistics (NUTS) in the Republic of Bulgaria



Methodological notes

Definitions

The district shall consist of one or more neighbouring municipalities. The territory of the district shall consist of the territory of the municipalities, included into it. The name of the district shall be the name of the settlement, which is its administrative centre (Territorial Administration of the Republic of Bulgaria Act, Art. 4).

The municipality consists of one or more neighbouring settlements. The territory of the municipality shall consist of the territories of the settlements, included into it. The name of the municipality shall be the name of the settlement, which is its administrative centre (Territorial Administration of the Republic of Bulgaria Act, Art. 7).

A mayoralty is a settlement with a population of over 100 people with a permanent address. (Territorial Administration of the Republic of Bulgaria Act, Art. 14). The territory of the mayoralty is the territory of the settlement. The name of the mayoralty shall be the name of the settlement, which is its administrative centre. (Territorial Administration of the Republic of Bulgaria Act, Art. 15).

A settlement is a historically and functionally separated territory, defined by the presence of a permanent resident population, a built-up area or a built-up area and land-use area and the required social and engineering infrastructure. The settlements are specified as towns and villages and shall be subject to registration in the Unified classifier of administrative-territorial and territorial units.

A settlement formation is a territory outside the built-up areas of existing settlements that does not have a permanent resident population and has specific functions, determined by its construction boundaries. The settlement formations are of national and local importance. The Council of Ministers shall determine the settlement formations of national importance.

Data sources

Data source for the administrative-territorial division of the country is the National Register of the Settlements, maintained by NSI: <https://www.nsi.bg/nrnm/>.

Data source for the territory in sq. km is the National Agency for Geodesy, Cartography and Cadastre.

Source of data on population number is the Information System Demography of NSI.

Computation Methods

The number of administrative-territorial and territorial units is calculated based on the data in the National Register of the Settlements as of 31 December of the reference year. The

data is entered into the Register after the promulgation of a decree by the President of the Republic of Bulgaria related to administrative-territorial changes in the country.

The population density is calculated by the total area of the territorial administration units and the population number as of 31 December 2024.

Territory by sq. km is calculated based on the digital cadastral map as of 31.12.2023 using GIS tools and the BGS2005 UTM35N coordinate system.

The population number as of 31 December is calculated based on the population data for the previous year, adjusted by the data on the natural population change and the net migration during the reference year.

More data on population numbers and structures are available here:
<https://infostat.nsi.bg/infostat>.

Legal basis

Article 135 of the Constitution of the Republic of Bulgaria (SG, No. 56/1991) determines that the territory of the country is divided into municipalities and districts.

In 1991, The Law on Local Self-Government and Local Administration (SG, No. 77/1991) determines the rules to be used by the citizens to solve different issues through the local authorities.

In 1995, the Territorial Administration of the Republic of Bulgaria Act was adopted, which regulate the public relationships connected with local self-government and local administration (SG, No. 63/1995).

The territorial division of the capital municipality and of the cities with a population over 300 000 is established by the Law on the Administrative Division of Sofia Municipality and Large Cities (SG, No. 66/1995). It provides also the names and the boundaries of the quarters of Sofia municipality, the cities of Plovdiv and Varna.

The territory of the country is divided into 28 districts (according to the amendment of the Territorial Administration of the Republic of Bulgaria Act, SG, No. 154/1998). The borders and their administrative centres have been approved by Decree № 1 of the President of the Republic of Bulgaria (SG, No. 2/1999) following the proposal of the Council of Ministers.

The text of Art. 12 of the Law on Local Self-Government and Local Administration was amended in 2006 as follows: 'The name of the municipality is the name of the settlement, which is its administrative centre, except for the municipalities as found by the law, where the administrative centres are settlements outside their territory, shared as such with other municipalities'. In addition to the case of Dobrich-selska (with administrative centre

Dobrich), this applies also to 3 other municipalities in the country - Maritsa, Rodopi (with administrative centre Plovdiv), and Tundzha (with administrative centre Yambol).

As defined by the Territorial Administration of the Republic of Bulgaria Act (Art. 37), NSI maintains the Unified Classifier of Administrative-Territorial and Territorial Units (UCATTU) and the National Register of Settlements. The content of the UCATTU and the Register, as well as the corresponding criteria and indicators, are approved by the Council of Ministers based on the proposal of the NSI and the other stakeholders.

The content of the UCATTU was approved by Decision № 565 of the Council of Ministers of 10 August 1999 (SG, No. 73/1999) and it covers all administrative-territorial and territorial units defined by the Territorial Administration of the Republic of Bulgaria Act. Each of them has an identification code in UCATTU.

The content of the National Register of the Settlements was approved by Decision № 695 of Council of Ministers, taken on 29 September 2006. The National Register of the Settlements aims to monitor the development and changes in the administrative-territorial and territorial units (establishing, merging, division, accession, closing down).

Regulation (EC) № 1059/2003 of the European Parliament and the Council establishing a common classification of territorial units for statistics (NUTS) was adopted of 26 May 2003. The purpose of the Regulation is to enable the collection, compilation and dissemination of harmonised regional statistics in the Community. Following the accession of Bulgaria and Romania to the European Union in 2007, Regulation (EC) № 176/2008 of the European Parliament and the Council amended the Annexes to Regulation № 1059/2003 of 20 February 2008 with the new Member States.

More information on the NUTS is available on the [website of NSI](#).

**ADMINISTRATIVE-TERRITORIAL AND TERRITORIAL DIVISION OF THE
REPUBLIC OF BULGARIA AS OF 31 DECEMBER 2024**

Annex

**Table 1. Population, territory and administrative-territorial and territorial units
in the Republic of Bulgaria as of 31 December 2024¹**

№	Districts		Population	Territory	Municipalities	Mayoralties	Towns	Villages
	EKATTE	Name	Number	Sq. km	Number	Number	Number	Number
0	BG	Bulgaria	6437360	110997	265	3041	257	4999
1	BLG	Blagoevgrad	286333	6459	14	160	13	261
2	BGS	Burgas	388919	7742	13	158	20	229
3	VAR	Varna	437521	3819	12	115	11	148
4	VTR	Veliko Tarnovo	200413	4659	10	107	14	322
5	VID	Vidin	70542	3039	11	56	7	133
6	VRC	Vratsa	146002	3623	10	100	8	115
7	GAB	Gabrovo	93817	2022	4	38	5	344
8	DOB	Dobrich	145207	4714	8	125	6	209
9	KRZ	Kardzhali	149478	3211	7	375	5	463
10	KNL	Kyustendil	106131	3059	9	63	7	175
11	LOV	Lovech	110823	4135	8	71	8	102
12	MON	Montana	112737	3637	11	78	8	122
13	PAZ	Pazardzhik	223494	4458	12	99	13	105
14	PER	Pernik	109886	2397	6	38	6	165
15	PVN	Pleven	215326	4653	11	105	14	109
16	PDV	Plovdiv	635630	5961	18	157	18	194
17	RAZ	Razgrad	99459	2412	7	92	6	97
18	RSE	Ruse	186093	2859	8	66	9	74
19	SLS	Silistra	93549	2845	7	81	5	113
20	SLV	Sliven	169299	3542	4	90	6	104
21	SML	Smolyan	90534	3205	10	98	8	232
22	SFO	Sofia	224701	7071	22	116	18	266
23	SOF	Sofia (stolitsa)	1295931	1343	1	33	4	34
24	SZR	Stara Zagora	288736	5148	11	125	11	195
25	TGV	Targovishte	94735	2708	5	127	5	189
26	HKV	Haskovo	207356	5530	11	168	10	251
27	SHU	Shumen	149279	3393	10	127	8	143
28	JAM	Yambol	105429	3353	5	73	4	105

¹ EKATTE - Unified classifier of administrative-territorial and territorial units (UCATTU); territory is calculated based on the digital cadastral map of the country as of 31.12.2023; the number of villages includes Rila monastery (Kyustendil district) and Klisura monastery (Montana district), which have settlement status.

**ADMINISTRATIVE-TERRITORIAL AND TERRITORIAL DIVISION OF THE
REPUBLIC OF BULGARIA AS OF 31 DECEMBER 2024**

**Table 2. Municipalities with population over 30 000 in the Republic of Bulgaria
as of 31 December 2024**

№	Municipality		Population	District	
	EKATTE	Name		EKATTE	Name
1	SOF46	Stolichna	1295931	SOF	Sofia (stolitsa)
2	PDV22	Plovdiv	329489	PDV	Plovdiv
3	VAR06	Varna	327424	VAR	Varna
4	BGS04	Burgas	195719	BGS	Burgas
5	SZR31	Stara Zagora	142296	SZR	Stara Zagora
6	RSE27	Ruse	137159	RSE	Ruse
7	SLV20	Sliven	110470	SLV	Sliven
8	PVN24	Pleven	109080	PVN	Pleven
9	PAZ19	Pazardzhik	88700	PAZ	Pazardzhik
10	PER32	Pernik	81170	PER	Pernik
11	HKV34	Haskovo	78812	HKV	Haskovo
12	SHU30	Shumen	77390	SHU	Shumen
13	VTR04	Veliko Tarnovo	77049	VTR	Veliko Tarnovo
14	DOB28	Dobrich	69434	DOB	Dobrich
15	BLG03	Blagoevgrad	69265	BLG	Blagoevgrad
16	KRZ16	Kardzhali	65935	KRZ	Kardzhali
17	SZR12	Kazanlak	63529	SZR	Stara Zagora
18	JAM26	Yambol	59364	JAM	Yambol
19	VRC10	Vratsa	59130	VRC	Vratsa
20	PDV01	Asenovgrad	56859	PDV	Plovdiv
21	GAB05	Gabrovo	49472	GAB	Gabrovo
22	TGV35	Targovishte	47823	TGV	Targovishte
23	KNL29	Kyustendil	46856	KNL	Kyustendil
24	BLG33	Petrich	46343	BLG	Blagoevgrad
25	PDV13	Karlovo	44894	PDV	Plovdiv
26	VID09	Vidin	44663	VID	Vidin
27	MON29	Montana	43397	MON	Montana
28	HKV09	Dimitrovgrad	42440	HKV	Haskovo
29	RAZ26	Razgrad	41981	RAZ	Razgrad
30	SLS31	Silistra	39578	SLS	Silistra
31	LOV18	Lovech	36384	LOV	Lovech
32	VTR06	Gorna Oryahovitsa	36312	VTR	Veliko Tarnovo
33	KNL48	Dupnitsa	35930	KNL	Kyustendil
34	BLG40	Sandanski	34716	BLG	Blagoevgrad
35	BGS15	Nesebar	33749	BGS	Burgas
36	SFO39	Samokov	33703	SFO	Sofia
37	PDV26	Rodopi	32359	PDV	Plovdiv
38	PAZ08	Velinograd	32181	PAZ	Pazardzhik
39	SML31	Smolyan	31910	SML	Smolyan
40	PDV17	Maritsa	31191	PDV	Plovdiv
41	SFO07	Botevgrad	30225	SFO	Sofia

**ADMINISTRATIVE-TERRITORIAL AND TERRITORIAL DIVISION OF THE
REPUBLIC OF BULGARIA AS OF 31 DECEMBER 2024**

Table 3. Quarters in Stolichna municipality as of 31 December 2024¹

№	Quarter		Population	
	EKATTE	Name	Number	%
1	68134-01	Sredets	24582	1.9
2	68134-02	Krasno selo	77272	6.0
3	68134-03	Vazrazhdane	36249	2.8
4	68134-04	Oborishte	27665	2.1
5	68134-05	Serdika	41036	3.2
6	68134-06	Poduyane	68383	5.3
7	68134-07	Slatina	62363	4.8
8	68134-08	Izgrev	31185	2.4
9	68134-09	Lozenets	56339	4.3
10	68134-10	Triaditsa	68513	5.3
11	68134-11	Krasna polyana	50924	3.9
12	68134-12	Ilinden	29028	2.2
13	68134-13	Nadezhda	63613	4.9
14	68134-14	Iskar	58244	4.5
15	68134-15	Mladost	100997	7.8
16	68134-16	Studentski	66011	5.1
17	68134-17	Vitosha	73778	5.7
18	68134-18	Ovcha kupel	54639	4.2
19	68134-19	Lyulin	101021	7.8
20	68134-20	Vrabnitsa	41967	3.2
21	68134-21	Novi Iskar	26999	2.1
22	68134-22	Kremikovtsi	21395	1.7
23	68134-23	Pancharevo	26561	2.0
24	68134-24	Bankya	11480	0.9

¹ As of 31 December 2024, 5.8% (75 687 persons) of the total population of the municipality are not assigned to any of the quarters due to incorrect or incomplete address information.

Table 4. Quarters in the city of Plovdiv as of 31 December 2024¹

№	Quarter		Population	
	EKATTE	Name	Number	%
1	56784-01	Tsentralen	66092	20.1
2	56784-02	Iztochen	41418	12.6
3	56784-03	Zapaden	36071	10.9
4	56784-04	Severen	46572	14.1
5	56784-05	Yuzhen	73654	22.4
6	56784-06	Trakia	51425	15.6

¹ As of 31 December 2024, 4.3% (14 257 persons) of the total population of the city of Plovdiv are not assigned to any of the quarters due to incorrect or incomplete address information.

Table 5. Quarters in the city of Varna as of 31 December 2024¹

№	Quarter		Population	
	EKATTE	Name	Number	%
1	10135-01	Odesos	68504	21.5
2	10135-02	Primorski	102668	32.2
3	10135-03	Mladost	74392	23.3
4	10135-04	Vladislav Varnenchik	35338	11.1
5	10135-05	Asparuhovo	22378	7.0

¹ As of 31 December 2024, 4.8% (15 457 persons) of the total population of the city of Varna are not assigned to any of the quarters due to incorrect or incomplete address information.

**ADMINISTRATIVE-TERRITORIAL AND TERRITORIAL DIVISION OF THE
REPUBLIC OF BULGARIA AS OF 31 DECEMBER 2024**

**Table 6. Towns with population over 20 000 in the Republic of Bulgaria
as of 31 December 2024**

№	Town		Population	Municipality		District	
	EKATTE	Name	Number	EKATTE	Name	EKATTE	Name
1	68134	Sofia	1205548	SOF46	Stolichna	SOF	Sofia (stolitsa)
2	56784	Plovdiv	329489	PDV22	Plovdiv	PDV	Plovdiv
3	10135	Varna	318737	VAR06	Varna	VAR	Varna
4	07079	Burgas	189014	BGS04	Burgas	BGS	Burgas
5	68850	Stara Zagora	121249	SZR31	Stara Zagora	SZR	Stara Zagora
6	63427	Ruse	121168	RSE27	Ruse	RSE	Ruse
7	56722	Pleven	88565	PVN24	Pleven	PVN	Pleven
8	67338	Sliven	78232	SLV20	Sliven	SLV	Sliven
9	72624	Dobrich	69434	DOB28	Dobrich	DOB	Dobrich
10	83510	Shumen	66641	SHU30	Shumen	SHU	Shumen
11	55871	Pernik	65799	PER32	Pernik	PER	Pernik
12	77195	Haskovo	63314	HKV34	Haskovo	HKV	Haskovo
13	04279	Blagoevgrad	62670	BLG03	Blagoevgrad	BLG	Blagoevgrad
14	10447	Veliko Tarnovo	59870	VTR04	Veliko Tarnovo	VTR	Veliko Tarnovo
15	87374	Yambol	59364	JAM26	Yambol	JAM	Yambol
16	55155	Pazardzhik	54297	PAZ19	Pazardzhik	PAZ	Pazardzhik
17	12259	Vratsa	48147	VRC10	Vratsa	VRC	Vratsa
18	00702	Asenovgrad	45362	PDV01	Asenovgrad	PDV	Plovdiv
19	14218	Gabrovo	43710	GAB05	Gabrovo	GAB	Gabrovo
20	40909	Kardzhali	41724	KRZ16	Kardzhali	KRZ	Kardzhali
21	35167	Kazanlak	41537	SZR12	Kazanlak	SZR	Stara Zagora
22	48489	Montana	35045	MON29	Montana	MON	Montana
23	41112	Kyustendil	34334	KNL29	Kyustendil	KNL	Kyustendil
24	10971	Vidin	33448	VID09	Vidin	VID	Vidin
25	73626	Targovishte	32627	TGV35	Targovishte	TGV	Targovishte
26	21052	Dimitrovgrad	30280	HKV09	Dimitrovgrad	HKV	Haskovo
27	61710	Razgrad	27888	RAZ26	Razgrad	RAZ	Razgrad
28	43952	Lovech	27046	LOV18	Lovech	LOV	Lovech
29	66425	Silistra	26879	SLS31	Silistra	SLS	Silistra
30	68789	Dupnitsa	26370	KNL48	Dupnitsa	KNL	Kyustendil
31	56126	Petrich	25966	BLG33	Petrich	BLG	Blagoevgrad
32	16359	Gorna Oryahovitsa	24957	VTR06	Gorna Oryahovitsa	VTR	Veliko Tarnovo
33	67653	Smolyan	24292	SML31	Smolyan	SML	Smolyan
34	65231	Samokov	23921	SFO39	Samokov	SFO	Sofia
35	65334	Sandanski	23592	BLG40	Sandanski	BLG	Blagoevgrad

**ADMINISTRATIVE-TERRITORIAL AND TERRITORIAL DIVISION OF THE
REPUBLIC OF BULGARIA AS OF 31 DECEMBER 2024**

**Table 7. Villages with population over 3 000 in the Republic of Bulgaria
as of 31 December 2024**

№	Villages		Population	Municipality		Districts	
	EKATTE	Name	Number	EKATTE	Name	EKATTE	Name
1	44063	Lozen	6592	SOF46	Stolichna	SOF	Sofia (stolitsa)
2	04234	Bistritsa	6018	SOF46	Stolichna	SOF	Sofia (stolitsa)
3	00895	Aydemir	5058	SLS31	Silistra	SLS	Silistra
4	35239	Kazichene	4885	SOF46	Stolichna	SOF	Sofia (stolitsa)
5	23234	Draginovo	4691	PAZ08	Velingrad	PAZ	Pazardzhik
6	62949	Rozino	4315	PDV13	Karlovo	PDV	Plovdiv
7	73242	Trud	4039	PDV17	Maritsa	PDV	Plovdiv
8	11394	Vladaya	4022	SOF46	Stolichna	SOF	Sofia (stolitsa)
9	03620	Belozem	3720	PDV25	Rakovski	PDV	Plovdiv
10	78029	Tsalapitsa	3658	PDV26	Rodopi	PDV	Plovdiv
11	59032	Parvenets	3519	PDV26	Rodopi	PDV	Plovdiv
12	61056	Ravda	3515	BGS15	Nesebar	BGS	Burgas
13	47295	Markovo	3502	PDV26	Rodopi	PDV	Plovdiv
14	52012	Novi han	3394	SFO17	Elin Pelin	SFO	Sofia
15	72816	Topolchane	3393	SLV20	Sliven	SLV	Sliven
16	06306	Breznitsa	3300	BLG11	Gotse Delchev	BLG	Blagoevgrad
17	12283	Vrachesh	3221	SFO07	Botevgrad	SFO	Sofia
18	41143	Kalipetrovo	3203	SLS31	Silistra	SLS	Silistra
19	55419	Pancharevo	3190	SOF46	Stolichna	SOF	Sofia (stolitsa)
20	18490	Elin Pelin	3168	SFO17	Elin Pelin	SFO	Sofia
21	38916	Kostenets	3138	SFO25	Kostenets	SFO	Sofia
22	62858	Rogosh	3104	PDV17	Maritsa	PDV	Plovdiv
23	17436	Gradets	3104	SLV11	Kotel	SLV	Sliven
24	12084	Voluyak	3096	SOF46	Stolichna	SOF	Sofia (stolitsa)
25	06999	Bukovlak	3095	PVN24	Pleven	PVN	Pleven
26	06505	Brestovitsa	3039	PDV26	Rodopi	PDV	Plovdiv
27	72709	Topoli	3024	VAR06	Varna	VAR	Varna
28	59077	Parvomay	3012	BG413	Petrich	BLG	Blagoevgrad

**Table 8. Settlement formations of national importance in the Republic of
Bulgaria as of 31 December 2024¹**

№	Settlement formation		Municipality		District	
	EKATTE	Name	EKATTE	Name	EKATTE	Name
1	94015	Resort „Zlatni pyasatsi“	VAR06	Varna	VAR	Varna
2	94040	Resort „Sv. sv. Konstantin i Elena“	VAR06	Varna	VAR	Varna
3	99958	Resort „Albena“	DOB03	Balchik	DOB	Dobrich
4	98212	Resort „Slanchev bryag“	BGS15	Nesebar	BGS	Burgas
5	94085	Resort „IYC - Primorsko“	BGS27	Primorsko	BGS	Burgas
6	98260	Holiday village „Dyuni“	BGS21	Sozopol	BGS	Burgas
7	98226	Resort „Borovets“	SFO39	Samokov	SFO	Sofia
8	98230	Resort „Pamporovo“	SML38	Chepelare	SML	Smolyan
			SML31	Smolyan		

¹ IYC - International Youth Center.

**ADMINISTRATIVE-TERRITORIAL AND TERRITORIAL DIVISION OF THE
REPUBLIC OF BULGARIA AS OF 31 DECEMBER 2024**

**Table 9. Population by Territorial Units for Statistics (NUTS)
as of 31 December 2024¹**

№	Code	Level	NUTS	Population		Territory
				Number	%	Sq. km
1	BG	NUTS0	Bulgaria	6437360	100.0	110997
2	BG3	NUTS1	<i>Severna i Yugoiztochna Bulgaria</i>	3107886	48.3	68303
3	BG31	NUTS2	Severozapaden	655430	10.2	19087
4	BG311	NUTS3	Vidin	70542	1.1	3039
5	BG313	NUTS3	Vratsa	146002	2.3	3623
6	BG315	NUTS3	Lovech	110823	1.7	4135
7	BG312	NUTS3	Montana	112737	1.8	3637
8	BG314	NUTS3	Pleven	215326	3.3	4653
9	BG32	NUTS2	Severen tsentralen	673331	10.5	14797
10	BG321	NUTS3	Veliko Tarnovo	200413	3.1	4659
11	BG322	NUTS3	Gabrovo	93817	1.5	2022
12	BG324	NUTS3	Razgrad	99459	1.5	2412
13	BG323	NUTS3	Ruse	186093	2.9	2859
14	BG325	NUTS3	Silistra	93549	1.5	2845
15	BG33	NUTS2	Severoiztochen	826742	12.8	14634
16	BG331	NUTS3	Varna	437521	6.8	3819
17	BG332	NUTS3	Dobrich	145207	2.3	4714
18	BG334	NUTS3	Targovishte	94735	1.5	2708
19	BG333	NUTS3	Shumen	149279	2.3	3393
20	BG34	NUTS2	Yugoiztochen	952383	14.8	19785
21	BG341	NUTS3	Burgas	388919	6.0	7742
22	BG342	NUTS3	Sliven	169299	2.6	3542
23	BG344	NUTS3	Stara Zagora	288736	4.5	5148
24	BG343	NUTS3	Yambol	105429	1.6	3353
25	BG4	NUTS1	<i>Yugozapadna i Yuzhna tsentralna Bulgaria</i>	3329474	51.7	42694
26	BG41	NUTS2	Yugozapaden	2022982	31.4	20329
27	BG413	NUTS3	Blagoevgrad	286333	4.4	6459
28	BG415	NUTS3	Kyustendil	106131	1.6	3059
29	BG414	NUTS3	Pernik	109886	1.7	2397
30	BG412	NUTS3	Sofia	224701	3.5	7071
31	BG411	NUTS3	Sofia (stolitsa)	1295931	20.1	1343
32	BG42	NUTS2	Yuzhen tsentralen	1306492	20.3	22365
33	BG425	NUTS3	Kardzhali	149478	2.3	3211
34	BG423	NUTS3	Pazardzhik	223494	3.5	4458
35	BG421	NUTS3	Plovdiv	635630	9.9	5961
36	BG424	NUTS3	Smolyan	90534	1.4	3205
37	BG422	NUTS3	Haskovo	207356	3.2	5530

¹ NUTS - Nomenclature of Territorial Units for Statistics.